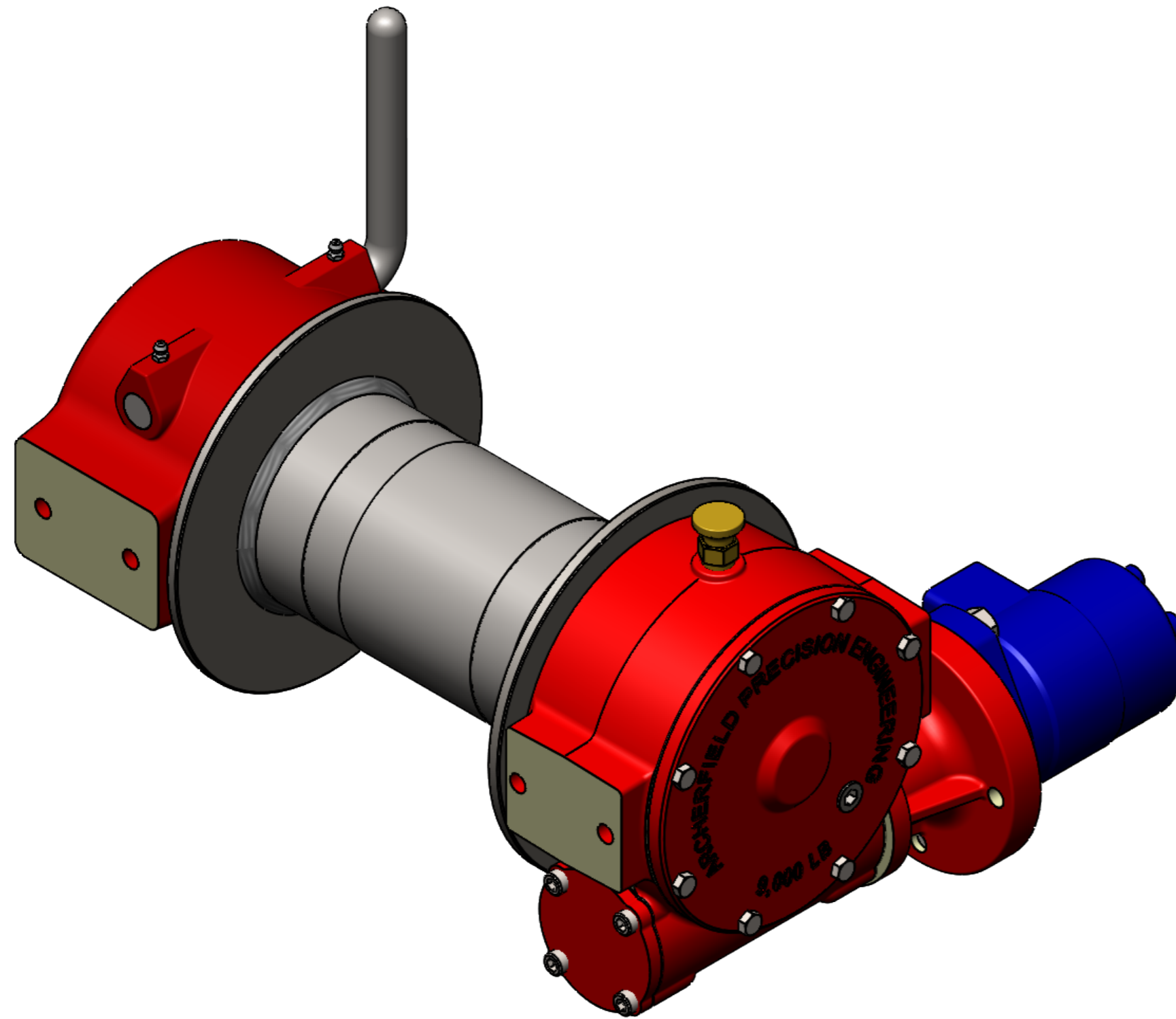


ITEM NO.	QTY.	DESCRIPTION	PART NUMBER	Length
1	1	WORMBOX HOUSING	W9-0101	
2	1	BUSH - WORMBOX HOUSING	W8-0700	31.8
3	4	BUSH - WORMBOX HOUSING	W9-0700	31.8
4	1	1 1/2" DRUM SHAFT - 9" DRUM	W8-0554	419.1
5	2	KEY - IMPERIAL	5/16" SQ x 1.115"	
6	2	KEY - IMPERIAL	5/16" SQ x 1 7/8"	
7	1	WORMWHEEL HUB	W9-0440	28.6
8	1	WORMWHEEL	W8-0420	30.2
9	1	WORMBOX COVER GASKET	W8-0802	0.8
10	1	WORMBOX COVER	W8-0151	
11	1	WORM - HYDRAULIC	W8-0402	167.9
12	2	BALL BEARING 7304-B 20*52*15		
13	2	WORMSHAFT CAP GASKET	W8-0800	Ø83.3
14	1	WORMSHAFT CAP - BLIND	W8-0200	
15	1	OIL SEAL	CR14857	1.5x2x0.25
16	2	DRAG BRAKE PAD	W8-0640	12
17	2	DRAG BRAKE SPRING	W8-0641	
18	1	WINCH DRUM - DN100 x 9"	W8-0507	
19	1	DRUM SHAFT SPACER	W9-0590	7.1
20	1	DOG CLUTCH HOUSING	W9-0251	
21	1	DOG CLUTCH - 1 1/2" SHAFT	W9-0610	45.0
22	1	1/4" BEARING BALL		
23	1	DOG CLUTCH DETENT SPRING	W8-0631	0.33
24	1	DOG CLUTCH FORK	W8-0270	
25	1	DOG CLUTCH HANDLE	W8-0271	315
26	1	SOCKET SET SCREW 3/8"-24 UNF x 7/16"		
27	1	SOCKET SET SCREW 5/16"-18 UNC x 5/16"		
28	1	1/4" ROLL PIN		
29	1	HYDRAULIC MOTOR ADAPTOR	W8-0330	
30	1	HYDRAULIC COUPLING	W8-0340	76.2
31	1	O-RING -151 (3 x 3.1875 x 0.09375)		
32	1	SAM HYDRAULIC MOTOR BG S 080		
33	2	3/8" BSPT PLUG - HEX SOCKET		3/8" BSPT
34	1	BREATHER 3/8" BSPT		
35	1	GREASE NIPPLE 1/4" UNC 90 Degree		
36	2	GREASE NIPPLE 1/4" UNC STRAIGHT		
37	8	HEX HEAD BOLT 1/4"-20 UNC x 1"	HHSS 0.3125-18x1	
38	2	HEX HEAD SET SCREW 1/2"-13 UNC x 1 1/4"		
39	6	HEX HEAD SET SCREW 5/16"-18 UNC x 3/4"	HHSS 0.312-18x.75	
40	4	SOCKET HEAD CAP SCREW 5/16"-18 UNC x 1 1/4"		
41	4	SOCKET HEAD CAP SCREW 5/16"-18 UNC x 1"		



### GEARS AND WINCHES

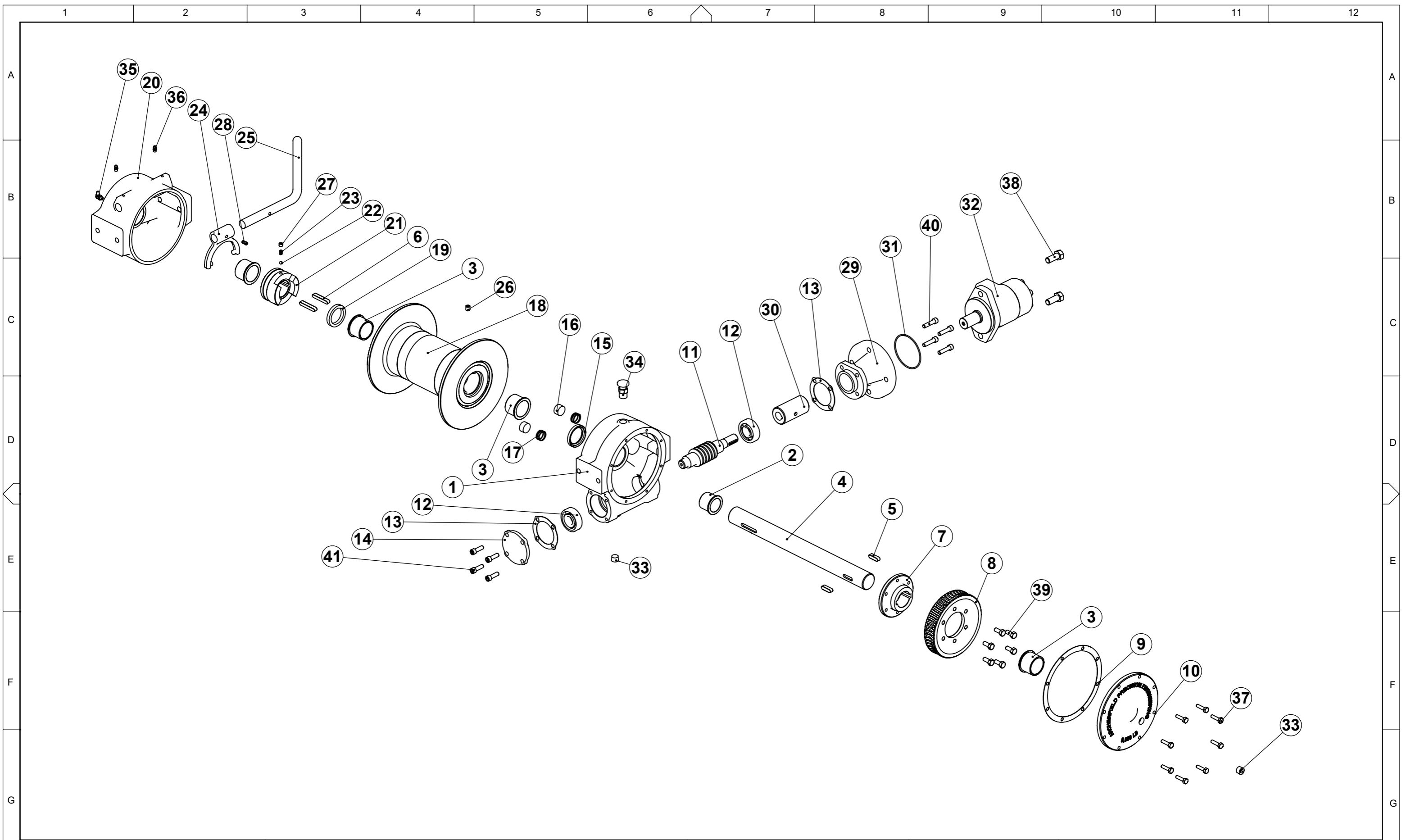
2 COIN ST MOOROOKA QLD 4105  
 PO BOX 206 ACACIA RIDGE QLD 4110  
 Ph (07) 3875 1568  
 Fx (07) 3277 4316  
 Email admin@winch.com.au

COPYRIGHT RESERVED. The design detailed on this drawing is the property of Archerfield Precision Engineering and must be returned on demand. It is issued on the strict condition that except with our written permission it must not be copied or communicated to any third party, nor is it to be used for any purpose other than for which it was issued.

DRAWN	RCT	20-08-10
CHECKED		
MATERIAL		
MATERIAL NOTES		
FINISH		
DATE PRINTED	WEIGHT	SCALE
3/09/2018	46.7 Kg	1:5

W8 RIGHT HAND HYDRAULIC - PARTS			
DATE PRINTED	WEIGHT	SCALE	SHEET No.
3/09/2018	46.7 Kg	1:5	1 OF 2
DWG No			- REV
			W8-0003-0

DWG No	REFERENCES	REV	DATE	DESCRIPTION	DRAWN	CHECK	APPD
1	2	3	4	5	6	7	8
		0	24/08/18	FIRST ISSUE	IRH		



DWG No	REFERENCES	REV	DATE	DESCRIPTION	DRAWN	CHECK	APPD
1	2	3	4	5	6	7	8

**GEARS AND WINCHES**  
 2 COIN ST MOOROOKA QLD 4105  
 PO BOX 206 ACACIA RIDGE QLD 4110  
 Ph (07) 3875 1568  
 Fx (07) 3277 4316  
 Email admin@winch.com.au

COPYRIGHT RESERVED. The design detailed on this drawing is the property of Archerfield Precision Engineering and must be returned on demand. It is issued on the strict condition that excepted to any third party, nor is it to be used for any purpose other than for which it was issued.

DRAWN	RCT	20-08-10
CHECKED		
MATERIAL		
MATERIAL NOTES		
FINISH		
DATE PRINTED	WEIGHT	SCALE
3/09/2018	46.7 Kg	1:7.5

<b>W8 HYDRAULIC x 214 mm DRUM</b>		
SHEET No.	DWG No	- REV
2 OF 2		W8-0003-0