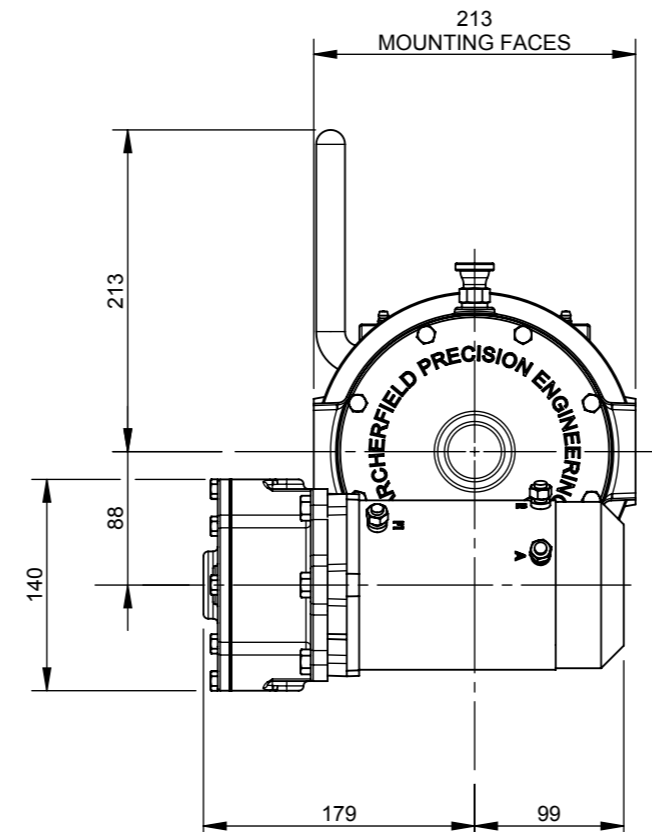


ITEM NO.	QTY.	DESCRIPTION	PART NUMBER	Length	ITEM NO.	QTY.	DESCRIPTION	PART NUMBER	Length
45	1	SOCKET SET SCREW 1/4"-28 UNF x 5/16"			1	1	WORMBOX HOUSING	W8-0101	
46	3	THRUST WASHER	W8-0916	1.9	2	5	BUSH - WORMBOX HOUSING	W8-0700	31.8
47	1	KEY - IMPERIAL		3/16" SQ x 1 1/2"	3	1	1 1/4" DRUM SHAFT - 9" DRUM	W8-0551	419.1
48	1	WOODRUFF KEY R B17.2-606		3/16" x 3/4"	4	2	KEY - IMPERIAL		5/16" SQ x 1.115"
49	1	O-RING			5	1	WORMWHEEL HUB	W8-0440	28.6
50	4	SOCKET HEAD CAP SCREW 5/16"-18 UNC x 1 5/8"			6	1	WORMWHEEL	W8-0420	30.2
51	2	PLUG - HEX SOCKET		3/8" BSPT	7	1	WORMBOX COVER GASKET	W8-0802	0.8
52	1	BREATHER 3/8" BSPT			8	1	WORMBOX COVER	W8-0151	
53	1	GREASE NIPPLE 1/4" UNC 90 Degree			9	1	WORM - ELECTRIC	W8-0404	238.2
54	2	GREASE NIPPLE 1/4" UNC STRAIGHT			10	2	ANGULAR CONTACT BALL BEARING 7304-B 20*52*15		
55	6	HEX HEAD SET SCREW 5/16"-18 UNC x 3/4"	HHSS 0.3125-18x0.75		11	1	KEY - IMPERIAL		3/16" SQ x 5/8"
56	4	HEX HEAD SET SCREW 5/16"-18 UNC x 1"	HHSS 0.3125-18x1		12	1	Circlip DIN 471 - 19 x 1.2		



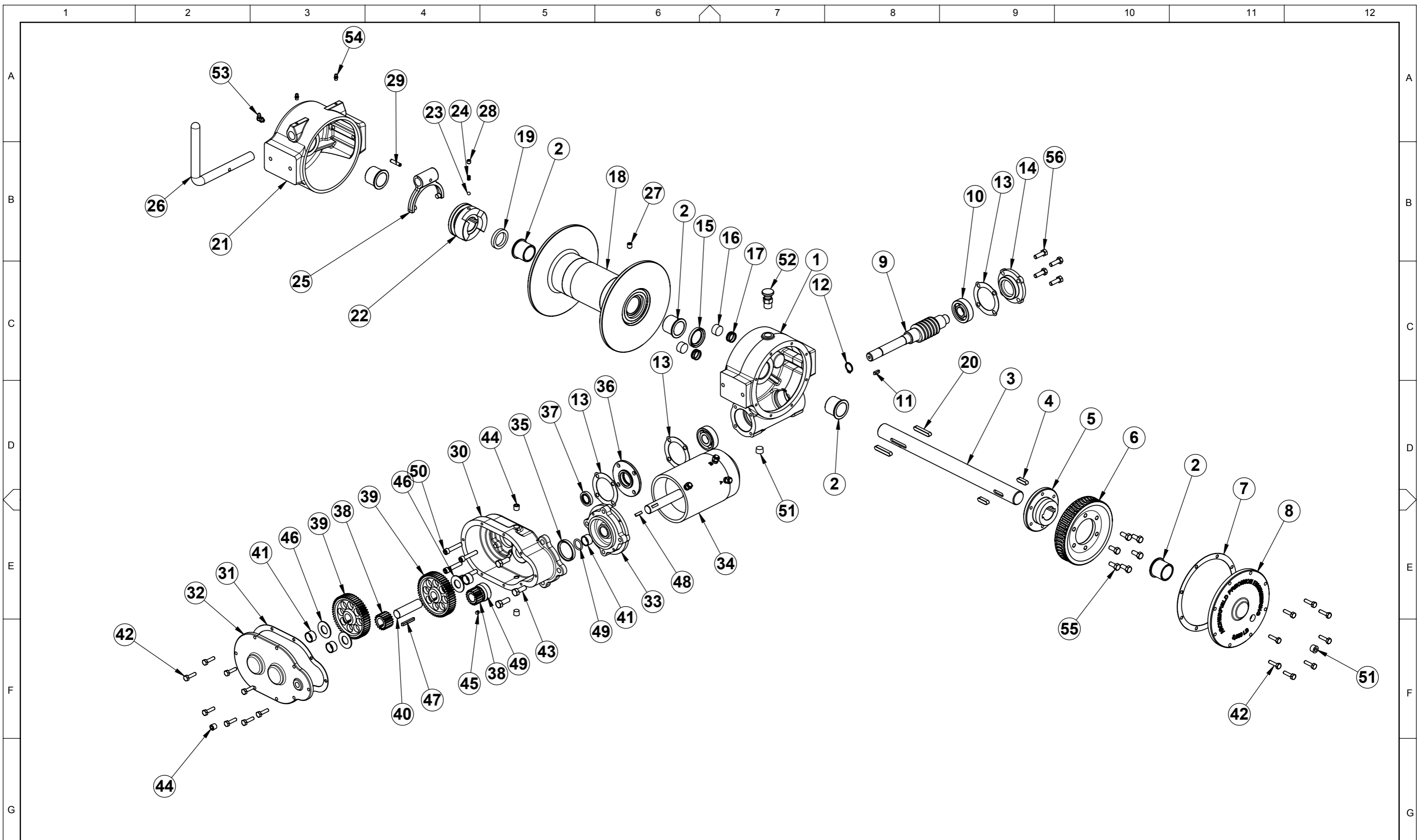
13	3	WORMSHAFT CAP GASKET	W8-0800	Ø83.3	14	1	WORMSHAFT CAP - BLIND	W8-0200	
15	1	OIL SEAL	CR12340	1.25x1.75x0.25	15	1	OIL SEAL	CR12340	1.25x1.75x0.25
16	2	DRAG BRAKE PAD	W8-0640	12	16	2	DRAG BRAKE PAD	W8-0640	12
17	2	DRAG BRAKE SPRING	W8-0641		17	2	DRAG BRAKE SPRING	W8-0641	
18	1	WINCH DRUM - DN80 x 9"	W8-0501	228.6	18	1	WINCH DRUM - DN80 x 9"	W8-0501	228.6
19	1	DRUM SHAFT SPACER	W8-0590	7.1	19	1	DRUM SHAFT SPACER	W8-0590	7.1
20	2	KEY - IMPERIAL		5/16" SQ x 1 7/8"	20	2	KEY - IMPERIAL		5/16" SQ x 1 7/8"
21	1	DOG CLUTCH HOUSING	W8-0251		21	1	DOG CLUTCH HOUSING	W8-0251	
22	1	DOG CLUTCH - 1 1/4" SHAFT	W8-0610	45.0	22	1	DOG CLUTCH - 1 1/4" SHAFT	W8-0610	45.0
23	1	1/4" BEARING BALL			23	1	1/4" BEARING BALL		
24	1	DOG CLUTCH DETENT SPRING	W8-0631	0.33	24	1	DOG CLUTCH DETENT SPRING	W8-0631	0.33
25	1	DOG CLUTCH FORK	W8-0270		25	1	DOG CLUTCH FORK	W8-0270	
26	1	DOG CLUTCH HANDLE	W8-0271	315	26	1	DOG CLUTCH HANDLE	W8-0271	315
27	1	SOCKET SET SCREW 3/8"-24 UNF x 7/16"			27	1	SOCKET SET SCREW 3/8"-24 UNF x 7/16"		
28	1	SOCKET SET SCREW 5/16"-18 UNC x 5/16"			28	1	SOCKET SET SCREW 5/16"-18 UNC x 5/16"		
29	1	SPRING PIN 1/4" x 1 1/8"			29	1	SPRING PIN 1/4" x 1 1/8"		
30	1	REDUCTION GEAR CASE HOUSING	W8-0901		30	1	REDUCTION GEAR CASE HOUSING	W8-0901	
31	1	MOTOR ADAPTOR GASKET	W8-0903		31	1	MOTOR ADAPTOR GASKET	W8-0903	
32	1	HOUSING COVER	W8-0902		32	1	HOUSING COVER	W8-0902	
33	1	ELECTRIC MOTOR ADAPTOR	W8-0904	60.6	33	1	ELECTRIC MOTOR ADAPTOR	W8-0904	60.6
34	1	ELECTRIC MOTOR - 12V	W8-0930		34	1	ELECTRIC MOTOR - 12V	W8-0930	
35	1	OIL SEAL	CR14807	1.5x1.875x0.25	35	1	OIL SEAL	CR14807	1.5x1.875x0.25
36	1	SPACER	W8-0905	11.1	36	1	SPACER	W8-0905	11.1
37	1	OIL SEAL	CR7440	0.75x1.25x0.25	37	1	OIL SEAL	CR7440	0.75x1.25x0.25
38	2	IDLER PINION	W8-0911	22	38	2	IDLER PINION	W8-0911	22
39	2	IDLER GEAR	W8-0912	17.5	39	2	IDLER GEAR	W8-0912	17.5
40	1	IDLER SHAFT	W8-0913	69.2	40	1	IDLER SHAFT	W8-0913	69.2
41	4	BUSH	W8-0915	12.7	41	4	BUSH	W8-0915	12.7
42	16	HEX HEAD BOLT 1/4"-20 UNC x 1"			42	16	HEX HEAD BOLT 1/4"-20 UNC x 1"		
43	3	HEX HEAD SET SCREW 3/8"-24 UNF x 1"	HHSS 0.3125-18x0.75		43	3	HEX HEAD SET SCREW 3/8"-24 UNF x 1"	HHSS 0.3125-18x0.75	
44	3	PLUG - HEX SOCKET		1/4" BSPT	44	3	PLUG - HEX SOCKET		1/4" BSPT

DWG No	REFERENCES	REV	DATE	DESCRIPTION	DRAWN	CHECK	APPD
1	2	0	26/03/11	FIRST ISSUE		RCT	

GEARS AND WINCHES
 2 COIN ST MOOROOKA QLD 4105
 PO BOX 206 ACACIA RIDGE QLD 4110
 Ph (07) 3875 1568
 Fx (07) 3277 4316
 Email admin@winch.com.au

COPYRIGHT RESERVED. The design detailed on this drawing is the property of Archerfield Precision Engineering and must be returned on demand. It is issued on the strict condition that except with our written permission it must not be copied or communicated to any third party, nor is it to be used for any purpose other than for which it was issued.

DRAWN	RCT	20-08-10	8,000 LB ELECTRIC WINCH			
CHECKED			EW8 x 214 mm DRUM			
MATERIAL			12 VOLT DC			
MATERIAL NOTES						
FINISH						
DATE PRINTED	WEIGHT	SCALE	SHEET No.	DWG No	- REV	
26/03/2011	35.2 Kg	1:5	1 OF 2	W8-0064-0		



DWG No	REFERENCES	REV	DATE	DESCRIPTION	DRAWN	CHECK	APPD
1	2	3	4	5	6	7	8
		0	26/03/11	FIRST ISSUE	RCT		

GEARS AND WINCHES
 2 COIN ST MOOROOKA QLD 4105
 PO BOX 206 ACACIA RIDGE QLD 4110
 Ph (07) 3875 1568
 Fx (07) 3277 4316
 Email admin@winch.com.au

COPYRIGHT RESERVED. The design detailed on this drawing is the property of Archerfield Precision Engineering and must be returned on demand. It is issued on the strict condition that except with our written permission it must not be copied or communicated to any third party, nor is it to be used for any purpose other than for which it was issued.

DRAWN	RCT	20-08-10	8,000 LB ELECTRIC WINCH	
CHECKED			EW8 x 214 mm DRUM	
MATERIAL			12 VOLT DC	
MATERIAL NOTES				
FINISH				
DATE PRINTED	WEIGHT	SCALE	SHEET No.	DWG No
26/03/2011	35.2 Kg	1:7.5	2 OF 2	W8-0064-0

- REV